

Meicen Y-Series AIO Baseplate

The Meicen Y-Series Baseplate have a Pin-lock design for easy operation, provide the highest degree of stability for head, head-shoulders, thorax, pelvic and full-body support. Dual-configured for adult and pediatric treatments. It is compatible with all S-type Masks and Meicen Pin-lock type Masks. Can be combined with Meicen Belly & Knee Bridge for SBRT treatment needs.

Specification: 1300(L) x 606(W)/mm



Y-Series AIO Baseplate Solutions

Optional Accessories



Carbon Fiber Headrest
RE-HSF6



Overhead Arm Support
RC-ASF01



Shoulder Retractor
MC-YG001-A03

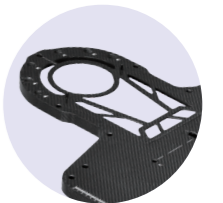
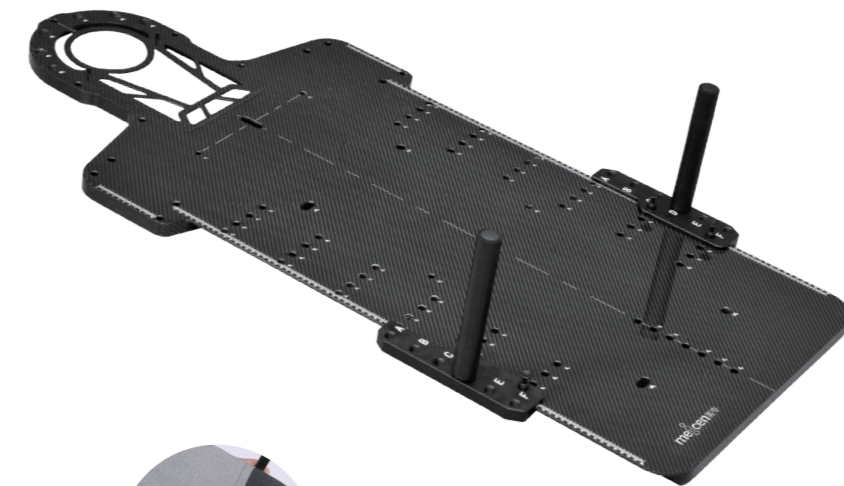


Belly Bridge
MC-YF001-A01

Meicen Y-Series AIO Baseplate

MC-YF001 Carbon Fiber

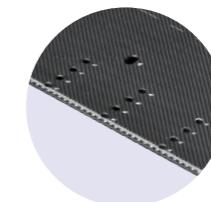
- Compatible with standard and narrow shoulder S-type Masks
- Combined with Belly Bridge to form a SBRT solution
- Different location choices to provide better immobilization for each patient
- Configured for multiple treatments



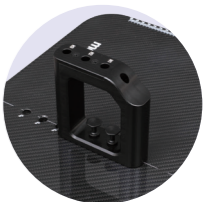
Pins for fixing headrests



Easily adjustable Hand Grips



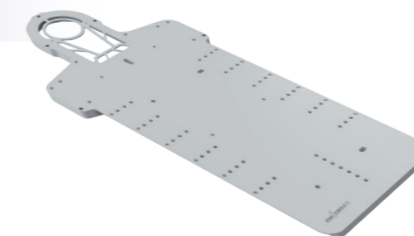
Adjustable to patient size



Optional locations for Leg Separator
MC-CG001-A04

Also Available As MR Compatible

MC-YG001



Compatible with



Indexing Bars

Meicen Y-Series AIO Baseplate

Belly Bridge MC-YF001-A01

- Carbon fiber material.
- Ergonomic Compression Paddle for better comfort.
- The paddle device can be adjusted in the direction of left and right, up and down, and has a scale to record its fixed position.
- Abundant scale marks improve the accuracy of positioning repeatability.
- MR compatible MC-YG001-A01



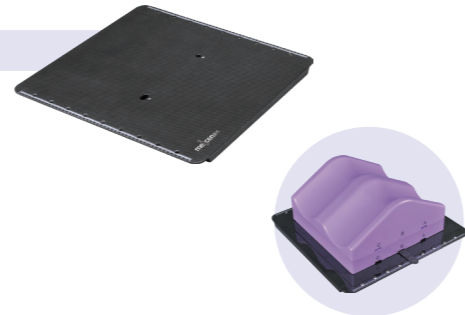
Belly Bridge MC-YF001-A02

- Carbon fiber material.
- The knee paddle device can be adjusted left and right, up and down, and has scales to record its fixed position.
- Abundant scale marks improve the accuracy of positioning repeatability.
- Knee paddle device is optional in both legs or single leg immobilization.
- MR compatible MC-YG001-A02



Extension Board RC-EBF01

- Improve the comfort of the patient when positioning.
- Can be fixed directly onto the couchtop.
- MR compatible RM-EBG01

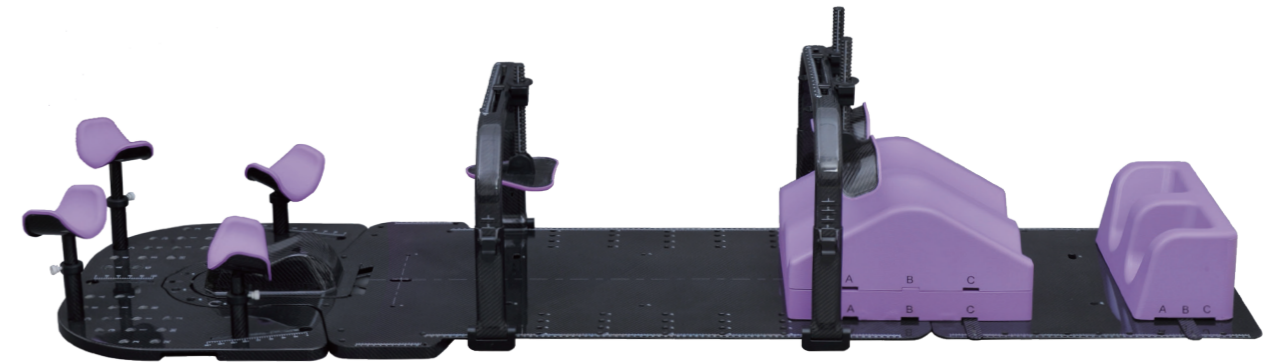


Overhead Arm Support RC-ASF01

- It can be used together with the C & Y-Series Baseplates to improve the reproducible precision and comfort in breast thorax and lung tumor treatment.
- The height of Wrist Supports and angle of Arm Supports can be adjusted to each patient.
- MR compatible RM-ASG01



Meicen Y-Series AIO Baseplate



Components	CF Package	MR Package	Qty
Belly Bridge	MC-YF001-A01	MC-YG001-A01	1
Knee Bridge	MC-YF001-A02	MC-YG001-A02	1
Extension Board	RC-EBF01	RM-EBG01	1
Overhead Arm Support	RC-ASF01	RM-ASG01	1
Knee Cushion	RE-FCA01	RE-FCA01	1
Elevation Cushion	RE-FCA02	RE-FCA02	1
Feet Cushion	RE-FCA03	RE-FCA03	1
Headrest	RE-HSF6	RE-HSB5	1
Indexing Bar (for E-style indexed couchtops)	RC-LBE02	RM-LBE01	2
Indexing Bar (for V-style indexed couchtops)	RC-LBV02	RM-LBV01	2
Shoulder Retractor	MC-YG001-A03	MC-YG001-A03	1

Also Available As MR Compatible

