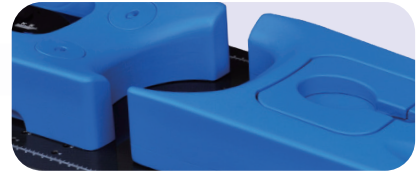


Meicen R-Series

Prone Belly Solutions

MC-RPE002 Prone Belly Cushion

- The rail-type prone headrest with head to feet direction and the four-levels elevation angle can be adjusted to meet individual needs.
- Dual-configured for female and male treatments.
- It can be used with Trunk Mask to improve the immobilization effect.
- Compatible with C & Y-Series AIO Baseplate.



Prone Headrest



Compatible with

M2422-VST190W Trunk Mask 22% perforation 2.4mm

M3038-VST480W Trunk Mask 38% perforation 3.0mm

Compatible with Trunk Mask together can be reduced the patient's involuntary displacement and improve the repeatability.

