

Meicen C-Series AIO Baseplate

The Meicen C-Series AIO Baseplate have a Pin-lock design for easy operation and provide the highest degree of stability for brain, head and neck, thorax, pelvic and full-body support. Dual-configured for both adult and pediatric treatments. The C-Series AIO Baseplate is lightweight and equipped with an adjustable shoulder retractor for shoulder suppression.



C-Series AIO Baseplate Solutions

Optional Accessories



Color Headrest
RE-HSB5



Overhead Arm Support
RC-ASF01



Shoulder Retractor
MC-CG001-A01



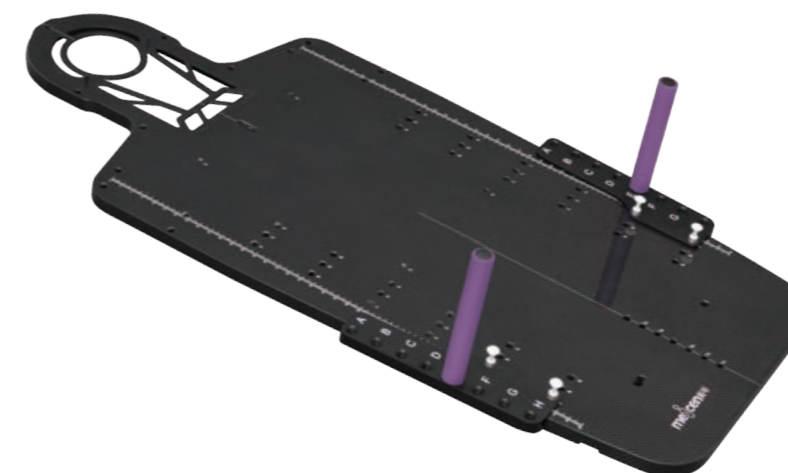
Leg Separator
MC-CG001-A04

Meicen C-Series AIO Baseplate

MC-CF001

- Comfortable shoulder retraction
- Different location choices to provide better immobilization for each patient
- Compatible with standard and narrow shoulder S-type masks
- Configured for multiple treatments

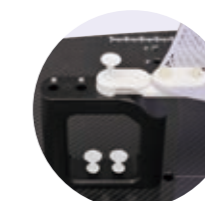
Specification: 1300(L) x 606(W)/mm



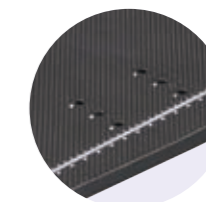
Pins for fixing headrests



Easily adjustable
Hand Grips



Optional locations for
Leg Separator



Adjustable to
patient size

Also Available As MR Compatible

MC-CG001

MR



Compatible with



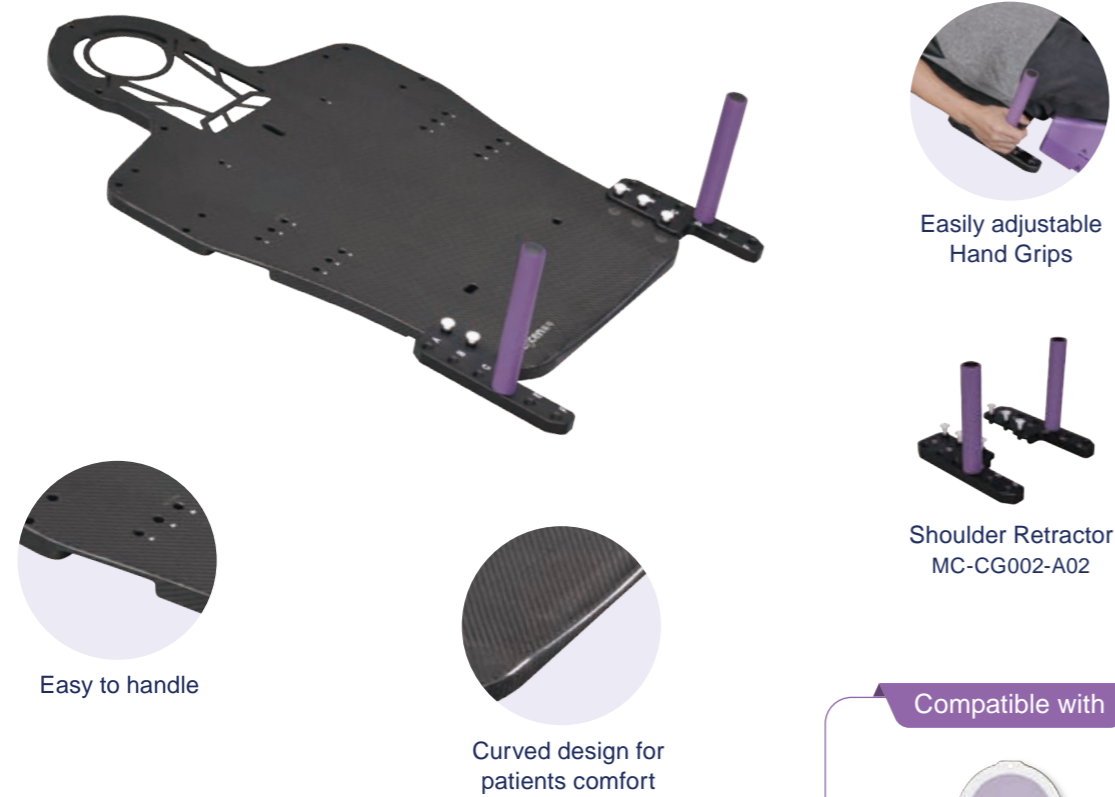
Indexing Bars

Meicen C-Series Head-Shoulder Baseplate

MC-CF002

- The bottom features a curved design for patients comfort
- Different location choices to provide better immobilization for each patient
- Provides the highest degree of stability for the head, neck and shoulders

Specification: 1000(L) x 606(W)/mm



Also Available As MR Compatible

MC-CG002

MR

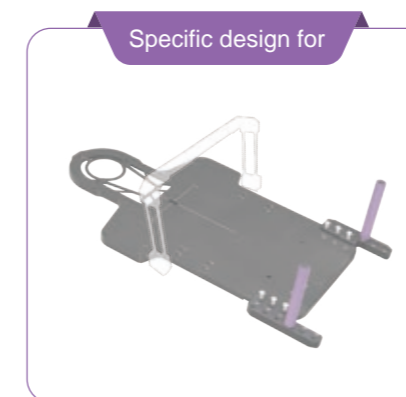
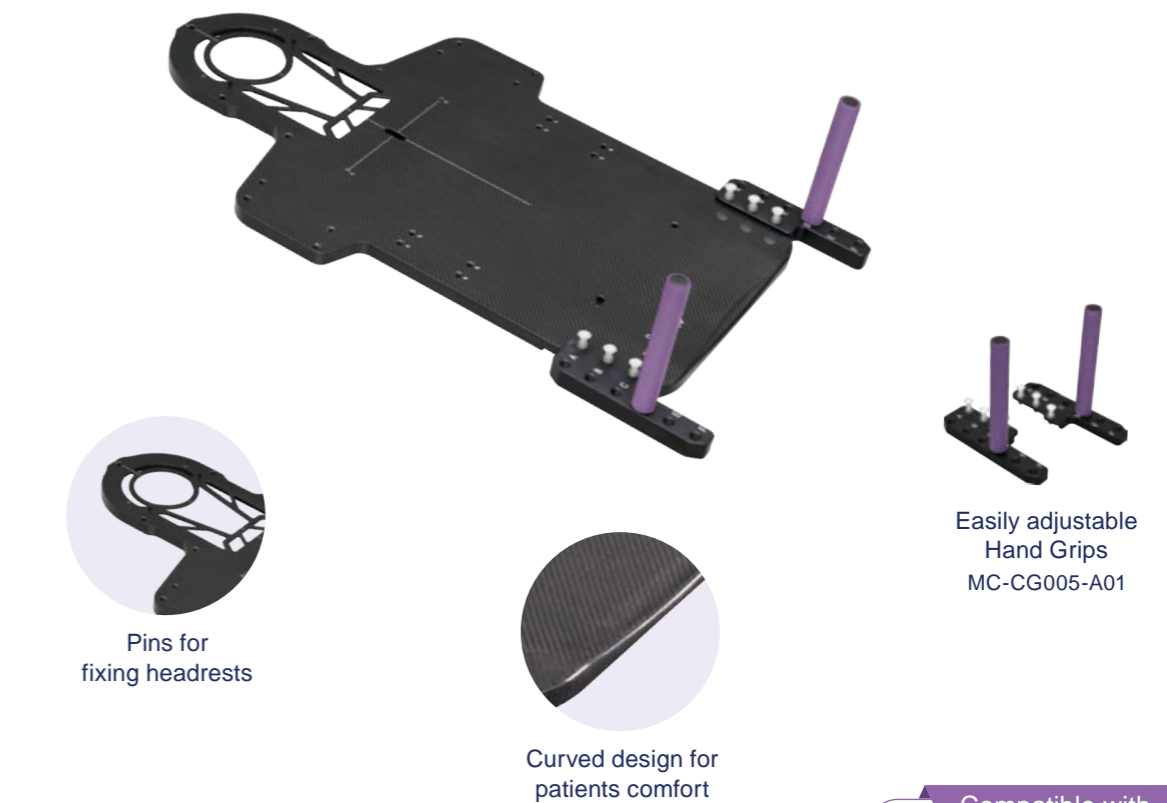


Meicen C-Series Head-Shoulder Baseplate

MC-CF005

- Provides the highest degree of stability for the head, neck and shoulders
- Configured for standard and narrow shoulder S-type masks

Specification: 1000(L) x 606(W)/mm

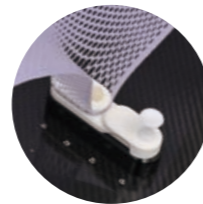


Meicen C-Series Pelvic Baseplate

MC-CF003

- Adjustable scale for different body width
- Side emargination for simple installation and carry
- Contoured design for patients comfort
- Configured for Trunk Masks in S, M and L size
- Provide positioning for leg separator

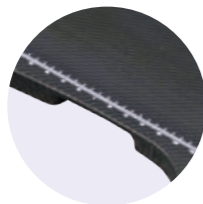
Specification: 850(L) x 575(W)/mm



Adjustable to patient size



Curved design for patients comfort



Easy to handle

Also Available As MR Compatible

MC-CG003

MR



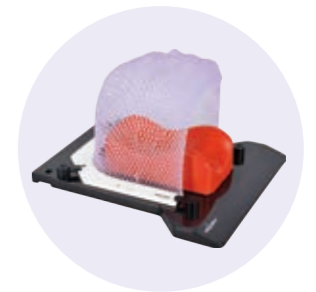
Meicen B-Series Baseplate

U-Frame Head Baseplate

MC-BF003

- Provides the head support
- Compatible with all U-frame Masks
- Compatible with Meicen different headrests
- MR compatible MC-BG003

Specification: 366(L) x 420(W)/mm



Tilting U-Frame Head Baseplate

MC-BF004

- Provides the head support
- Compatible with all U-frame Masks
- Tilting angles: 5°/10°/20°/25°/30°/35°/40°/45°
- Compatible with Meicen different headrests
- MR compatible MC-BG004

Specification: 377(L) x 306(W)/mm

