

Meicen C-Series AIO Baseplate

The Meicen C-Series AIO Baseplates have a Pin-lock design for easy operation and provide the highest degree of stability for head, head-shoulders, thorax, pelvic and full-body support. Dual-configured for both adult and pediatric treatments. The C-Series AIO Baseplates are lightweight and equipped with an adjustable shoulder retractor for shoulder suppression. They are compatible with all S-type Masks and Meicen Pin-lock type Masks.

Specification: 1300(L) x 606(W)/mm



Meicen C-Series AIO Baseplate

MC-CF001

Carbon Fiber

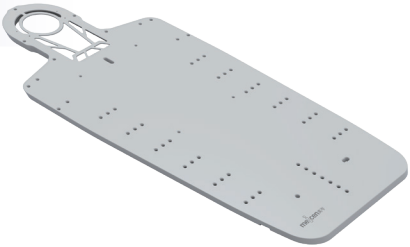
- Comfortable shoulder retraction
- Different location choices to provide better immobilization for each patient
- Compatible with standard and narrow shoulder S-type masks
- Configured for multiple treatments



Also Available As MR Compatible

MC-CG001

MR

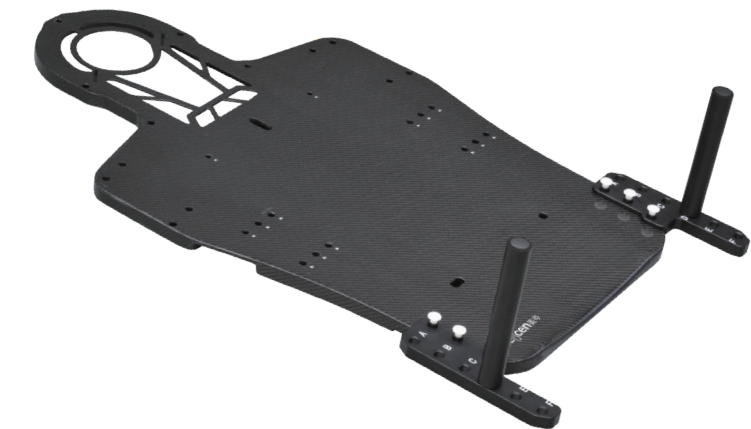


Meicen C-Series Head-Shoulder-Breast Baseplate

MC-CF002 Carbon Fiber

- The bottom features a curved design for patients comfort
- Different location choices to provide better immobilization for each patient
- Provides the highest degree of stability for the head, shoulders and breast
- Configured for multiple treatments

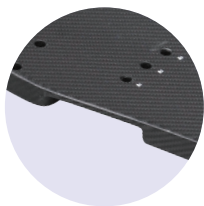
Specification: 1000(L) x 606(W)/mm



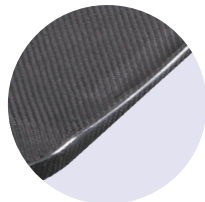
Easily adjustable Hand Grips



Shoulder Retractor MC-CG002-A02



Easy to handle

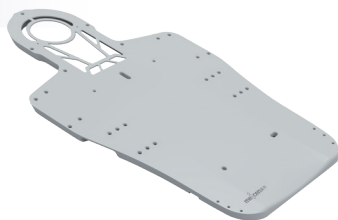


Curved design for patients comfort

Also Available As MR Compatible

MC-CG002

MR



Compatible with

S-Type Masks (Page 36-39)

Meicen C-Series Head-Shoulder Baseplate

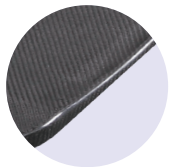
MC-CF005 Carbon Fiber

- Provides the highest degree of stability for the head and shoulders
- Configured for standard and narrow shoulder S-type masks

Specification: 1000(L) x 606(W)/mm



Easily adjustable Hand Grips MC-CG005-A01

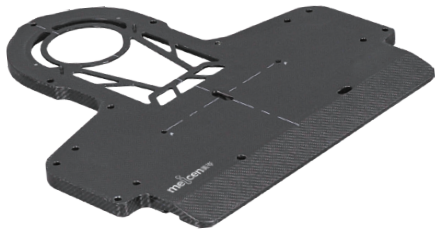


Curved design for patients comfort

Specific design for

MC-CF004 Carbon Fiber

Specification: 600(L) x 606(W)/mm



Compatible with

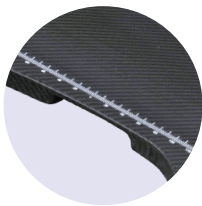
S-Type Masks (Page 36-39)

Meicen C-Series Pelvic Baseplate

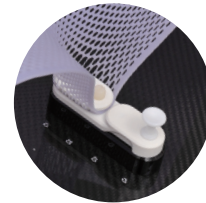
MC-CF003 Carbon Fiber

- Adjustable scale for different body widths
- Sides emargination for simple installation and carry
- Contoured design for patients comfort
- Configured for Trunk Masks in S, M and L size
- Provide positioning for leg separator

Specification: 850(L) x 575(W)/mm



Easy to handle



Adjustable to patient size



Curved design for patients comfort

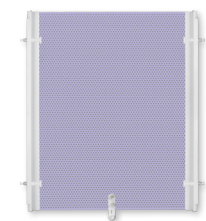
Also Available As MR Compatible

MC-CG003

MR



Compatible with



Pin-lock type
Trunk Masks (Page 45)